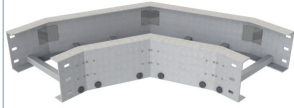
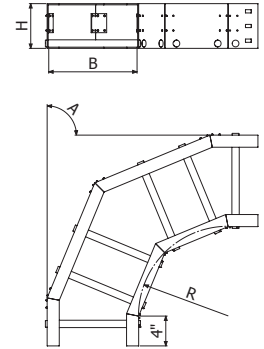




CPEFV H8



	A (°)	R		B		H		PRFV	
		inch	mm	inch	mm	inch	mm	REF	Kg/ud
CPEFV45-12 6X8	45	12	300	6	150	8	200	2/11453	3,76
CPEFV45-12 9X8	45	12	300	9	225	8	200	2/11454	3,94
CPEFV45-12 12X8	45	12	300	12	300	8	200	2/11455	4,13
CPEFV45-12 18X8	45	12	300	18	450	8	200	2/11456	4,49
CPEFV45-12 24X8	45	12	300	24	600	8	200	2/11457	4,85
CPEFV45-12 30X8	45	12	300	30	750	8	200	2/11458	5,22
CPEFV45-12 36X8	45	12	300	36	900	8	200	2/11459	5,34
CPEFV-12 6X8	90	12	300	6	150	8	200	2/11460	5,04
CPEFV-12 9X8	90	12	300	9	225	8	200	2/11461	5,41
CPEFV-12 12X8	90	12	300	12	300	8	200	2/11462	5,77
CPEFV-12 18X8	90	12	300	18	450	8	200	2/11463	6,50
CPEFV-12 24X8	90	12	300	24	600	8	200	2/11464	7,23
CPEFV-12 30X8	90	12	300	30	750	8	200	2/11465	7,96
CPEFV-12 36X8	90	12	300	36	900	8	200	2/11466	8,69
CPEFV45-24 6X8	45	24	600	6	150	8	200	2/11467	4,32
CPEFV45-24 9X8	45	24	600	9	225	8	200	2/11468	4,53
CPEFV45-24 12X8	45	24	600	12	300	8	200	2/11469	4,74
CPEFV45-24 18X8	45	24	600	18	450	8	200	2/11470	5,16
CPEFV45-24 24X8	45	24	600	24	600	8	200	2/11471	5,58
CPEFV45-24 30X8	45	24	600	30	750	8	200	2/11472	6,00
CPEFV45-24 36X8	45	24	600	36	900	8	200	2/11473	6,14
CPEFV-24 6X8	90	24	600	6	150	8	200	2/11474	5,80
CPEFV-24 9X8	90	24	600	9	225	8	200	2/11475	6,22
CPEFV-24 12X8	90	24	600	12	300	8	200	2/11476	6,64
CPEFV-24 18X8	90	24	600	18	450	8	200	2/11477	7,47
CPEFV-24 24X8	90	24	600	24	600	8	200	2/11478	8,31
CPEFV-24 30X8	90	24	600	30	750	8	200	2/11479	9,15
CPEFV-24 36X8	90	24	600	36	900	8	200	2/11480	9,99
CPEFV45-36 6X8	45	36	900	6	150	8	200	2/11481	4,97
CPEFV45-36 9X8	45	36	900	9	225	8	200	2/11482	5,21
CPEFV45-36 12X8	45	36	900	12	300	8	200	2/11483	5,46
CPEFV45-36 18X8	45	36	900	18	450	8	200	2/11484	5,94
CPEFV45-36 24X8	45	36	900	24	600	8	200	2/11485	6,42
CPEFV45-36 30X8	45	36	900	30	750	8	200	2/11486	6,90
CPEFV45-36 36X8	45	36	900	36	900	8	200	2/11487	7,06
CPEFV-36 6X8	90	36	900	6	150	8	200	2/11488	6,67
CPEFV-36 9X8	90	36	900	9	225	8	200	2/11489	7,15
CPEFV-36 12X8	90	36	900	12	300	8	200	2/11490	7,63
CPEFV-36 18X8	90	36	900	18	450	8	200	2/11491	8,59
CPEFV-36 24X8	90	36	900	24	600	8	200	2/11492	9,56
CPEFV-36 30X8	90	36	900	30	750	8	200	2/11493	10,52
CPEFV-36 36X8	90	36	900	36	900	8	200	2/11494	11,48



2 x JUEFV 8 (2/12071)